



Connecting Country Website and Interactive Mapping Tool

The Connecting Country website www.connectingcountry.org.au is the interactive hub of the project. It has been designed to enable project participants and partners not only to find out about the progress of Connecting Country but also to facilitate information sharing. Visitors to the site can access project maps, photo galleries, project documents and publications, read news and hear about upcoming events. An events calendar has been designed for local community organisations such as Landcare and environmental groups to post details of their activities. Users can also contribute photographs to the photo gallery, post news items and access the Community Web Mapping Portal (see below) to report and share local environmental information such as significant flora and fauna sightings.



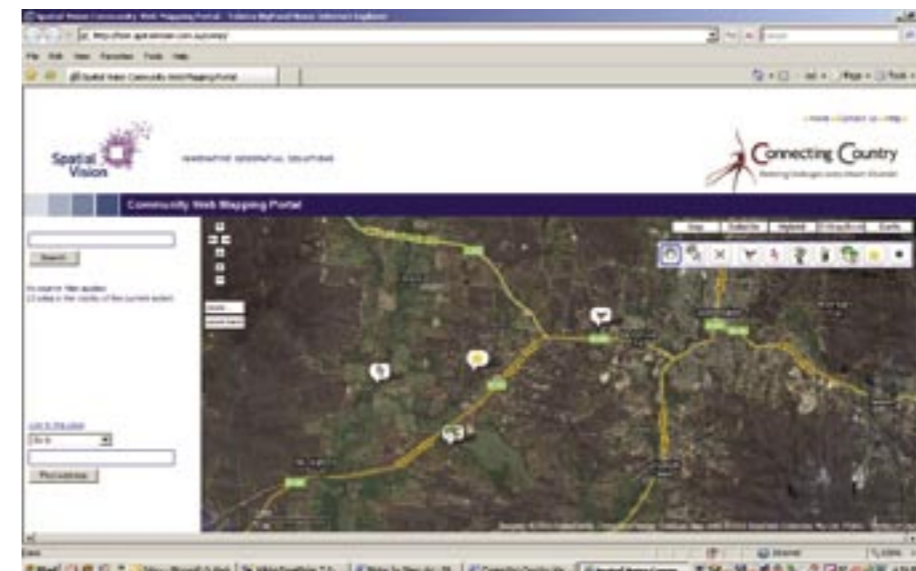
The Community Web Mapping Portal

An integral part of the website is the Community Web Mapping Portal which has been designed with one of our project partners, Spatial Vision. [A Melbourne-based company, Spatial Vision <http://www.spatialvision.com.au> works at the leading edge of geospatial and information technology. They develop innovative solutions that integrate geographic information with business applications and offer unparalleled expertise in the delivery of web-based systems. Spatial Vision has accumulated significant experience in the development of land, natural resource management and applied social and economic research systems for organisations in Australia and internationally.]

The Community Web Mapping Portal (CWMP) is a web mapping application where individuals and community groups can view, create and share information about their local landscape. The application is built using Google Maps technology and has the same base satellite imagery and street map information as the Google Maps website (<http://maps.google.com.au/>). The website also contains a preliminary version of Spatial Vision's Map Book digital dataset as a base layer.

Users of the website can create simple point based records of sites in the landscape, enter textual information about the site and create web links to other web pages that contain further information about the site. The web application provides a place where information about the landscape can be shared and exchanged. Spatial Vision has developed that initial version of the CWMP for the Connecting Country project.

The CWMP can be accessed by navigating to the interactive mapping section of the Connecting Country website or at <http://test.spatialvision.com.au/cwmp/>. A comprehensive help menu is provided for new users of the application.



The Community Web Mapping Portal (CWMP) interface showing Google imagery and map layer. Users can add and edit a variety of information including:

- Fauna, flora and weed infestation sites
- Records of remnant protection and revegetation activities
- Sites of ecological or cultural significance



Detailed information can be recorded for sites as well as photographs and links to a "wiki" that enables updating of additional information over time.